

# Advanced Environmental Instrumentation

Harnessing the Power of Mobile Computing



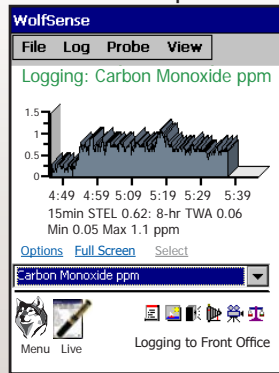
✓ Surveyed

✓ Documented

✓ Reported



### Live Graph



### Example Screens

### Live Display

WolfSense			
File	Log	Probe	View
TVOC		186	ppb
Carbon Dioxide		593	ppm
Carbon Monoxide		1.2	ppm
Hydrogen Sulfide		0.49	ppm
ΔP		-0.3	Pa
Barometric		1013.2	mbar
Temp1		21.0	°C
Temp2		22.3	°C
ΔT		1.3	°C

Menu Live: Plant\Front Office



### Audio Notes

### Site/Location Description

# ADVANCEDSENSE<sup>®</sup>

Environmental Test Meter



**GRAYWOLF<sup>®</sup>**  
**SENSING SOLUTIONS**  
 PH. 1-203-402-0477  
 FAX: 1-203-402-0478

EMAIL:  
 SALESTEAM@GRAYWOLFSENSING.COM

WEBSITE:  
 WWW.GRAYWOLFSENSING.COM

**GrayWolf is transforming the way that environmental measurements are taken. The AdvancedSense meter runs highly advanced, very user-friendly application software. Display, data-log and annotate (on-site) a broad range of parameters with a single, rugged, cutting edge instrument.**

- Simultaneously connect 1 or 2 GrayWolf DirectSense<sup>®</sup> probes (plus a particulate or HCHO meter) with up to 6 sensors per probe (even more probes with Y-adapters)
- Available sensors; auto-zeroing differential pressure, barometric pressure, VOCs (PID), CO<sub>2</sub> (NDIR), %RH, °C/°F, CO, O<sub>3</sub>, NH<sub>3</sub>, H<sub>2</sub>S, NO, NO<sub>2</sub>, SO<sub>2</sub>, Cl<sub>2</sub>, EtO, HCN, HF, HCl and other parameters
- 2 thermocouple sockets (standard) for air, liquid, surface temperature measurement (solo or differential)
- Backlit color touch screen with virtual keyboard (for text input such as descriptive data file names)
- Feature rich with productivity tools that make your environmental surveys more efficient, more detailed, more reliable:
  - Voice notes with optional audio to text transcription
  - Optional camera for photo/video notes
  - Text notes, field (Word template) notes, event notes and more in-situ
  - Notes auto-attach to data files
  - On-board educational info, application docs, sensor tips and more
  - Data transfer & reporting software for trend graphs, note management & much more
- Highly intuitive and extremely Easy-To-Use



# ADVANCEDSENSE®

## Environmental Test Meter

**SPECIFICATIONS:**

(for additional sensor/probe specifications refer to GrayWolf's DirectSense®, pitot tube and thermocouple brochures)

- General:**
- Dimensions:** 96.0mm (3.8in.) w. x 177mm (7.0in.) h. x 47.0mm (1.8in.) d.
  - Construction:** Rugged polycarbonate plastic with rubberized side grips. IP64
  - Weight:** 785gr (1lb 8.5oz.) Add 50gr (1.5oz.) for auto-zeroing ΔP option
  - Screen Size:** 785mm (3.5in.) QVGA 240 x 320 TFT color touch screen with backlight
  - Memory:** 4GB for data-logging (1 million+ readings) and notes (photo/video/audio); plus 2GB for program, help videos, documents and auto data backup
  - Audio:** Integral electret microphone (on front) and 4 ohm speaker (on back)
  - Mounting:** 1/4" - 20 thread (on back) for belt clip, etc. (& for included mini tripod/stand)
  - Operating Range:** -10°C to 50°C (-15°F to 122°F), 0 to 100 %RH non-condensing
- Connectors:**
- 2 x Lemo 8 pin for GrayWolf DirectSense probes (the AdvancedSense will support up to 4 x DirectSense probes with Y-adapters)
  - 1 x Lemo 7 pin for particulate, 3rd party meters or RH-AS2 %RH, °C / °F probe
  - 2 x sub-mini type K thermocouple temperature sockets. Range -80 to 1100°C (-110 to 2010°F)
  - 1 x Lemo 7 pin socket for formaldehyde meter, camera or optional USB key download cable
  - 1 x USB mini B socket. 1m USB B to USB A download cable supplied as standard
  - 1 x 9V power adapter socket
  - Optional; 2 x 4mm posts for differential pressure tubing
- Power:**
- Battery:** 4250 mAh Lithium Ion rechargeable
  - Battery Life:** 32+ hours typical for new battery with backlight off (and probes self-powering) The AdvancedSense can power DirectSense probes. Battery life will vary when powering probes or pressure sensors
  - Recharge time:** 4 hours typical. LED displays charging/fully charged status
  - Power supply:** 100/240VAC, 50-60Hz external charger. Specify local plug.
- Optional Built-in Sensors:**

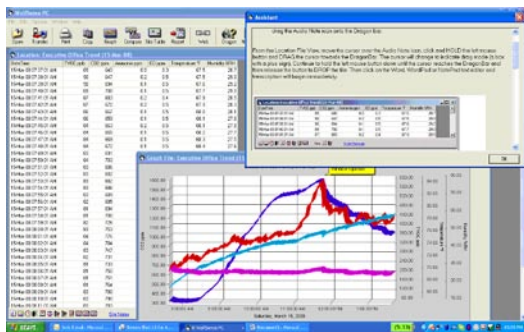
- GrayWolf Software is 21 CFR Part 11 Compliant  
**All specifications are subject to change without further notice**

	Differential Pressure (DP-702LH)	Barometric Pressure (BP-101)*
Range	+/- 10,000Pa, +/-40 inH <sub>2</sub> O, +/- 1000 mmH <sub>2</sub> O, +/-100 mbar, +/-70 mmHg	600 to 825 mmHg, 800 to 1100mBar, 23.50 to 32.50 inHg, 0.80 to 1.10atm
Resolution	0.1 Pa, 0.001 inH <sub>2</sub> O, 0.01 mmH <sub>2</sub> O, 0.001 mbar, 0.001 mmHg	0.1mmHg, 0.1mBar, 0.01 inHg, 0.01 atm +/-0.1% rdg
Accuracy (auto-zeroing enabled)	+/-1% of rdg +/-0.2Pa up to 250Pa, +/-1%rdg +/-4Pa >250Pa (+/-1% of rdg +/-0.001 inH <sub>2</sub> O to 1.000 inH <sub>2</sub> O, +/-1%rdg +/-0.015 inH <sub>2</sub> O>1.000 inH <sub>2</sub> O)	

Differential Pressure is auto-zeroing (every 2 minutes by default but zeroing frequency is user adjustable)

\*The barometric pressure sensor, when installed, will compensate mass concentration readings (µg/m<sup>3</sup>) for pressure changes.

WolfSense® PC data transfer and analysis software supplied as standard



**MEASURE SMART**

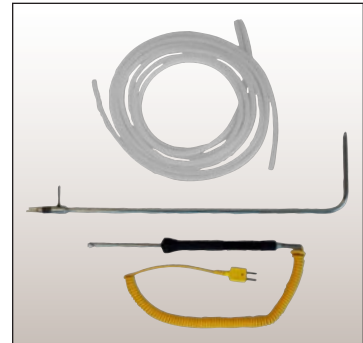
**REPORT EFFICIENTLY**



2m dual tubing is supplied with optional differential pressure sensor. GrayWolf offers a selection of pitot tubes for air velocity and K thermocouples for temperature measurement.



Optional ACC-CAM-PI for photo and video capture tagged to data files.



PCC-AS01 pouch with neck strap and belt loop for hands-free surveys



PCC-10A Hardshell Security case holds AdvancedSense, probes & accessories. Smaller/larger cases also available.



Audio-to-Text transcription software, Advanced Reporting Software, Calibration kits and other accessories are available from GrayWolf.

View them online at [accessories.graywolfsensing.com](http://accessories.graywolfsensing.com)

**GRAYWOLF SENSING SOLUTIONS**  
 6 RESEARCH DRIVE  
 SHELTON, CT 06484 USA  
 PH. (1)203-402-0477  
 800-218-7997  
 FAX: (1)203-402-0478

EMAIL: SALESTEAM@GRAYWOLFSENSING.COM

WWW.GRAYWOLFSENSING.COM

**Ti Techingenium**

Distribuidores autorizados para Uruguay  
 Venta - Ingeniería - Instalación - Mantenimiento  
 Francisco Soca 1531  
 Telefono: +598 2 707 48 01  
 Montevideo Uruguay  
 Mail: info@techingenium.com.uy  
 www.techingenium.com.uy