

## Control Unit Series 8453



- > Control unit equipped with resistor
  - 1 kΩ / 1 W or
  - 10 kΩ / 1 W
- > Depending on the order, the control unit can be equipped with
  - fuses
  - varistors
  - diodes
  - capacitors
  - other electrical / electronic components
- > Enclosure made of polyamide
- > Connection cross-section 0.75 ... 2.5 mm<sup>2</sup>  
single-wired / fine-stranded

**E4**



10018E00

The control units with resistor Series 8453 are used mostly for open-circuit and short-circuit monitoring of the contact elements Series 8082.

The enclosures of the control units and of the contact elements are identical.

Versions with screw terminals or with spring clamp terminals are available.

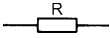
	ATEX / IECEx					
Zone	0	1	2	20	21	22
For use in		x	x			

**WebCode 8453A**

# Control Unit

## Series 8453

Selection Table

Version	Description		Order number	Weight kg
Control unit Series 8453/1 with screw terminal	 <small>10020E00</small>	Resistor 1 kΩ / 1 W	<b>8453/1-03-001</b>	0.050
		Resistor 10 kΩ / 1 W	<b>8453/1-03-002</b>	0.050
Control unit Series 8453/1 with spring clamp terminal	 <small>10020E00</small>	Resistor 1 kΩ / 1 W	<b>8453/2-03-001</b>	0.050
		Resistor 10 kΩ / 1 W	<b>8453/2-03-002</b>	0.050

### Explosion Protection

<b>Marking</b>	
IECEX	Ex de IIC (Ta = - 55 ... + 40 °C) Ex de I (Ta = - 55 ... + 40 °C)
Europe (ATEX)	⊕ II 2 G Ex de IIC (Ta = - 55 ... + 40 °C) ⊕ I M 2 Ex de I (Ta = - 55 ... + 40 °C)
<b>Certificates</b>	
IECEX	IECEX PTB 06.0031U
Europe (ATEX)	PTB 01 ATEX 1067 U
Other certificates	Belarus (Gospromnadzor)

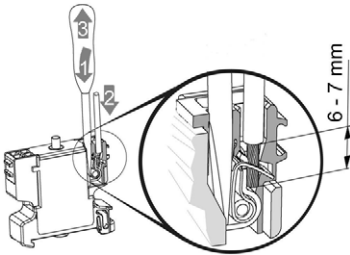
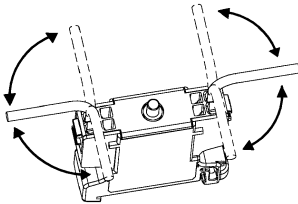
### Technical Data

<b>Electrical data</b>	
Rating	1 W
<b>Ambient conditions</b>	
Ambient temperature	see explosion protection data
<b>Mechanical data</b>	
Enclosure material	Polyamide
Connection cross-section	0.75 ... 2.5 mm² single-wired / fine-stranded

### Handling of the Conductor Connection as a Part of 8453/1

With element types 8453/1 (screw terminal), 1 and 2 conductors can be installed under a conductor connection.  
 With one wired conductors, the conductors must have the same kind of cross section and be made of the same material.  
 Conductors can be connected without any kind of special preparation.


### Handling of the Conductor Connection as a Part of 8453/2

05885E00

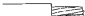
05886E00

**Usable Copper Connectors**




09178E00

solid



09188E00

stranded



09189E00

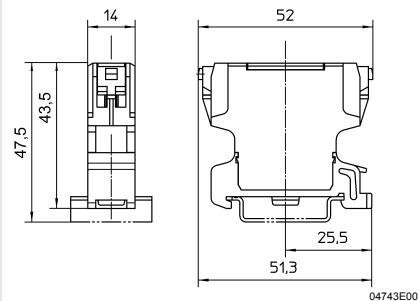
finely-stranded

## Control Unit

### Series 8453



#### Dimensional Drawings (All Dimensions in mm) - Subject to Alterations



Control unit with resistor 8453/-03-00.

We reserve the right to make alterations to the technical data, weights, dimensions, designs and products available without notice. The illustrations cannot be considered binding.

E4